

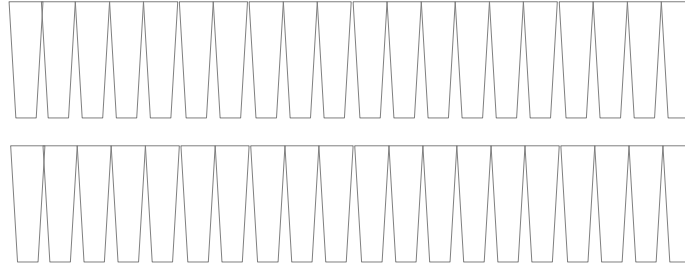
Selective breeding of Pacific oyster (*Crassostrea gigas*) for OsHV-1 resistance: impact of nutritional factors

Pauline kamermans



40 families
12♂ x 40♀
52 genotypes

Individually marked



Egg incubation

larvae

Same number of larvae per family

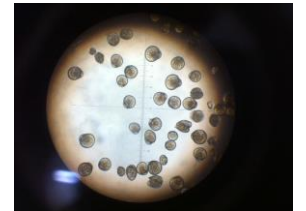


Larval rearing in 2 groups with 2 diets

survival and growth monitored

Control diet
(*Chaetoceros calictrans*,
Isochrysis galbana,
Pavlova lutheri)

Test diet (control + 25% *Nannochloropsis salina*)



Settlement

Settlement



2x200 genotypes
Spat rearing up to T8 in 2 groups with standard diet

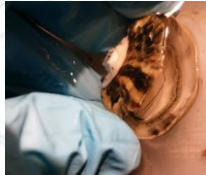
Outdoor challenge test
Standard diet

Outdoor challenge test
Test diet

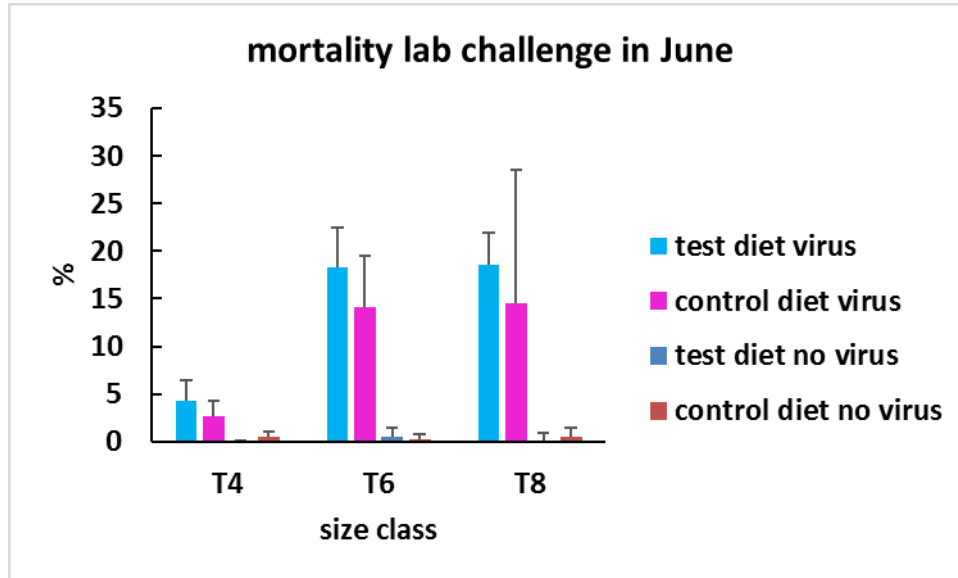
4x400 genotypes

Lab challenge test
Standard diet

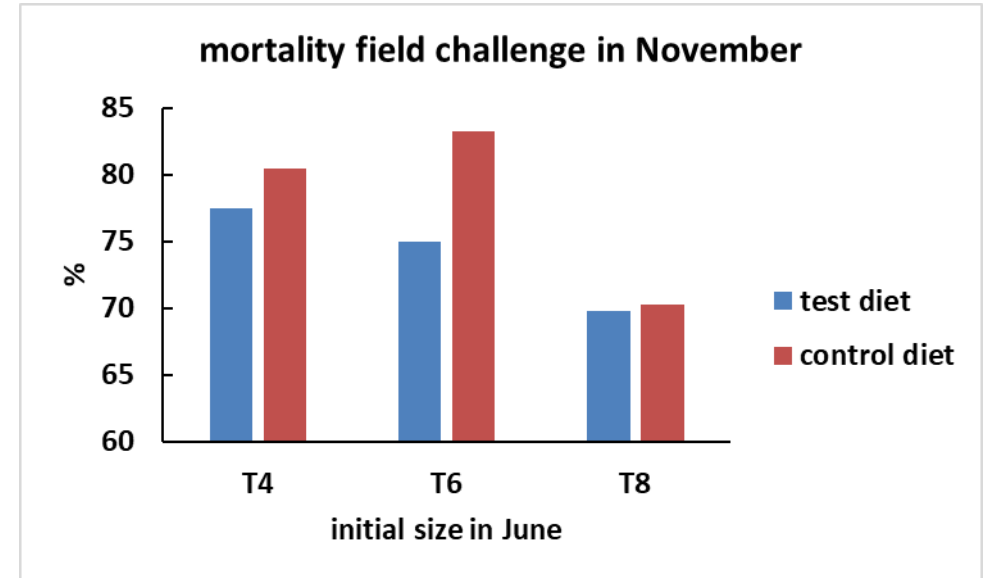
Lab challenge test
Test diet



Selective breeding of Pacific oyster (*Crassostrea gigas*) for OsHV-1 resistance: impact of nutritional factors

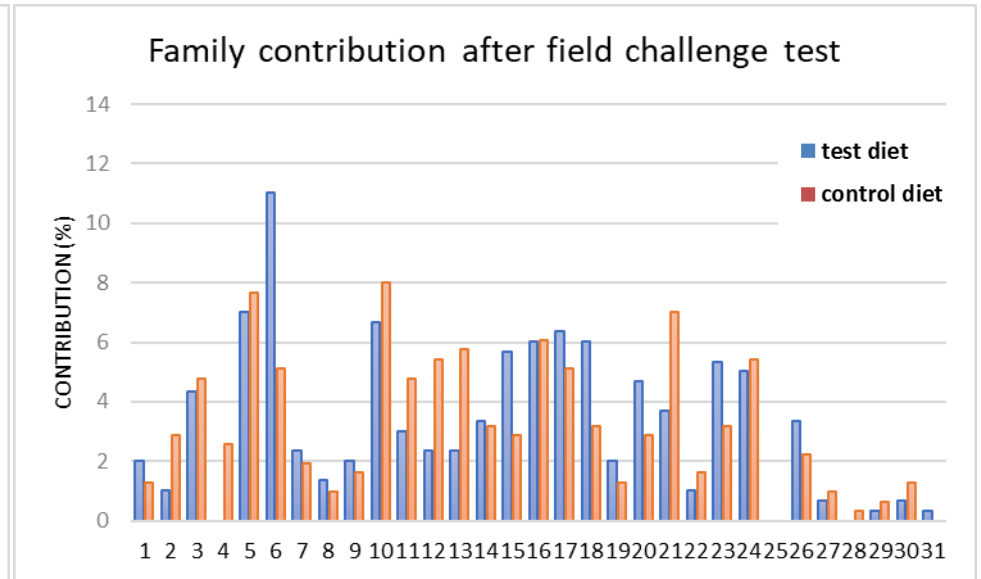
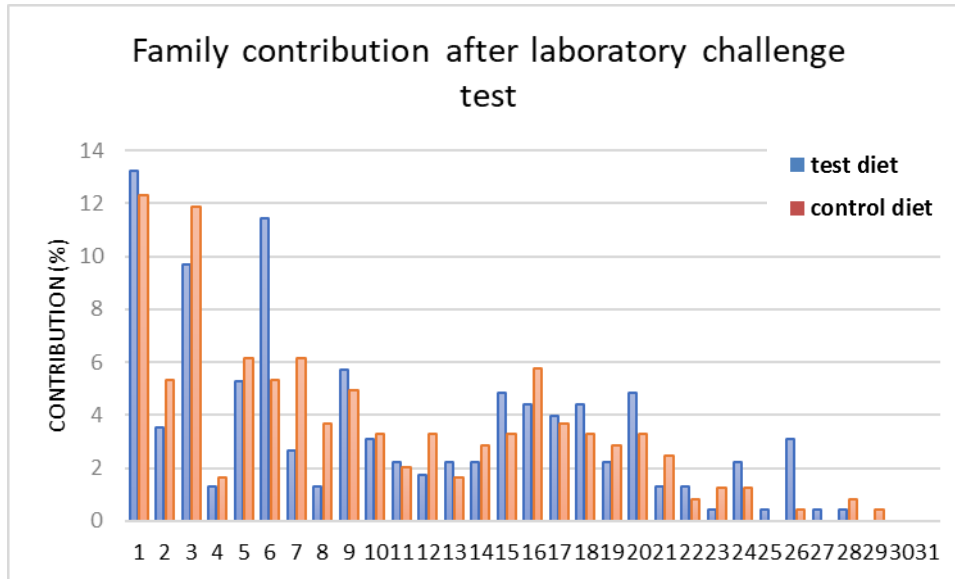


2 week exposure to infected oysters in lab
co-habitation oysters tested positive for OsHV-1



5 month exposure to virus in field

Selective breeding of Pacific oyster (*Crassostrea gigas*) for OsHV-1 resistance: impact of nutritional factors



Significant effect of family

Differences between short-term lab and long-term field challenge

No effect of larval diets, composition not significantly different

Selective breeding of Pacific oyster (*Crassostrea gigas*) for OsHV-1 resistance: impact of nutritional factors



Pauline Kamermans
Ainhoa Blanco
Pim van Dalen
Marc Engelsma
Kasper Janssen



Benjamin Morga
Jean-Baptiste Lamy



Nienke Bakker
Frank Peene



Lucie Genestout